

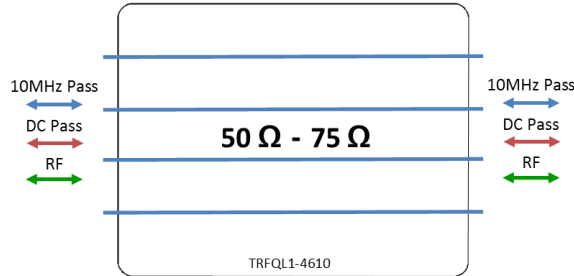


Model Number:
TRFQL1-4610

RF Components

4-Way L-Band Impedance Transformer

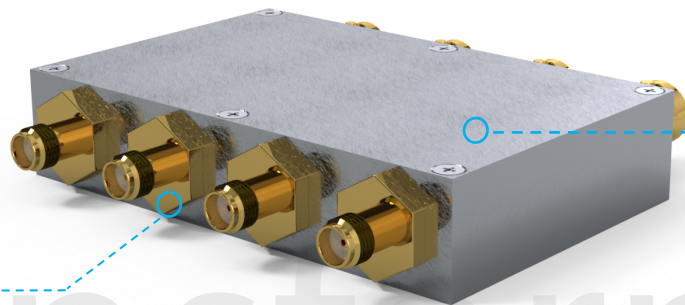
850 - 2150 MHz



- All ports 10MHz & DC pass

Available with RF connector options:

- 50 Ω SMA
- 50 Ω N-type
- 50 Ω BNC
- 75 Ω BNC
- 75 Ω F-type.



Compact

Housed in rugged compact enclosure



850-2150 MHz
Operating frequency range. L-Band ready

Transformer

RF Parameters						
TRFQL1-4610-XXXX	S5B7	S5F7	N5B7	N5F7	B5B7	B5F7
Frequency Range	850 - 2150 MHz					
RF Connectors	SMA	SMA	N-Type	N-Type	BNC	BNC
Mean Insertion Loss (dB)	0.4±0.3	0.5±0.3	0.4±0.3	0.5±0.3	0.4±0.3	0.5±0.3
Flatness ± (dB)	±0.5	±0.5	±0.5	±0.5	±0.5	±0.5
50Ω Port	-	-	-	-	-	-
Return Loss (dB)	20	20	20	20	18	18
	15	15	15	15	14	14
75Ω Port	-	-	-	-	-	-
Return Loss (dB)	18	16	18	16	16	16
	12	12	14	12	12	12

Broadcast



Marine Oil & Gas



SNG & VSAT



Satellite Teleport





RF Components

Model Number:

TRFQL1-4610

4-Way L-Band Impedance Transformer

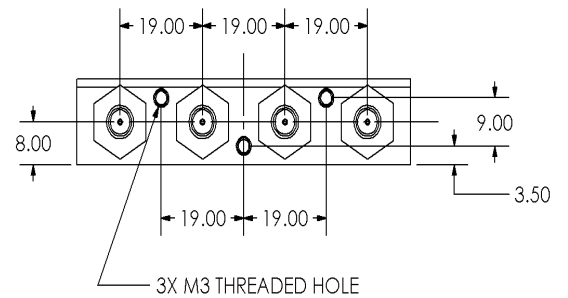
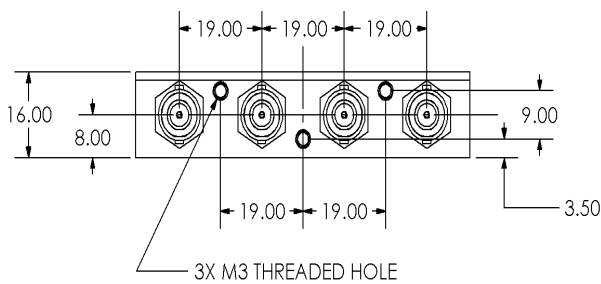
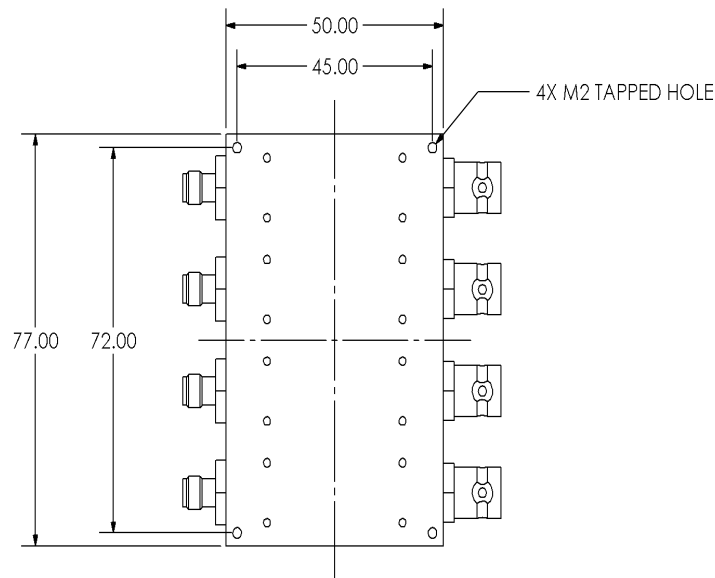
Technical specifications and operating parameters

Environmental		
Operating Temperature		0°C to +45°C
Storage Temperature		-20°C to +75°C
Location		Indoor use Only
Humidity	Max	85% non-condensing
Altitude	Max	10,000 feet

Max Operating Parameters	
Input RF Power	+37 dBm (5W)
DC Voltage	50V on any RF port
DC Current	3.5A
DC Consumption	N/A

! Operation beyond these limits may cause instantaneous and permanent damage.

Physical Dimensions (mm)



Note: The specification is subject to regular reviews and will be updated from time to time as part of our continuing product development and improved specification accuracy.

ETL SYSTEMS LIMITED
Coldwell Radio Station
Madley
Hereford
England HR2 9NE

TELEPHONE
+44 (0)1981 259020

EMAIL
info@etlsystems.com

FACSIMILE
+44 (0)1981 259021

WEB
www.etlsystems.com

